

AGES 4+

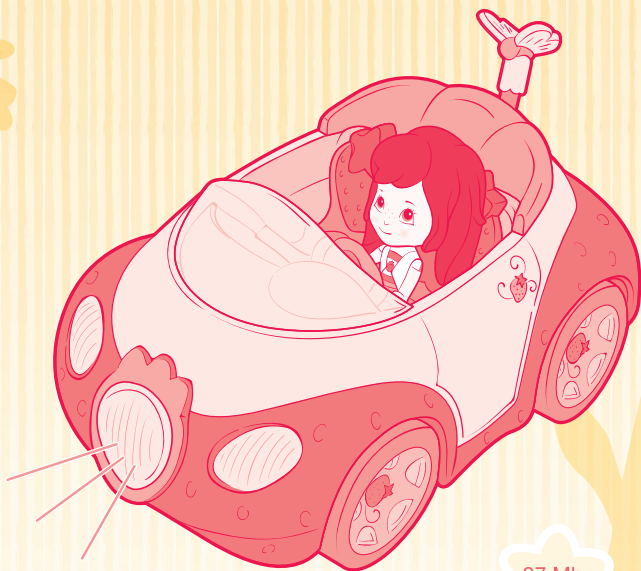
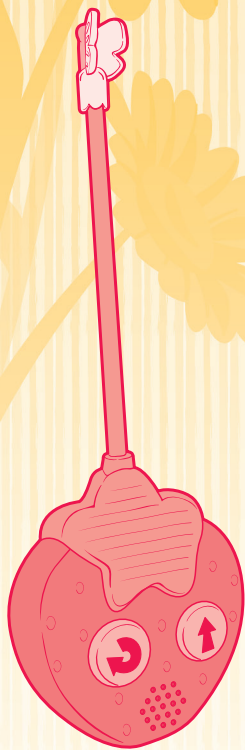
# Strawberry Shortcake™

**⚠ CAUTION:**

Hair entanglement may result if child's hair comes in contact with moving parts of toy. Adult supervision is required.

## Sun Lovin' Convertible™

Radio-Controlled Vehicle



Includes: Radio control, vehicle  
and 1 scented mini doll.

27 Mhz

Radio Control

**x2 ALKALINE BATTERIES**  
1.5VAA or LR6 size  
**NOT INCLUDED REQUIRED**

Phillips/cross head screwdriver (not included)  
needed to insert batteries.

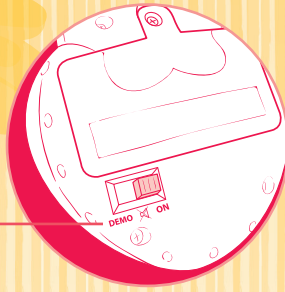
Vehicle

**x3 ALKALINE BATTERIES**  
1.5VAA or LR6 size  
**NOT INCLUDED REQUIRED**

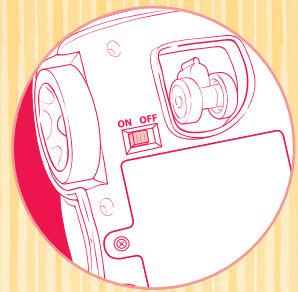
Phillips/cross head screwdriver (not included)  
needed to insert batteries.

## GETTING STARTED

Radio Control




Vehicle



On the back of the radio control, slide the DEMO/  /ON switch to the ON position. Turn the vehicle ON by sliding the vehicle's ON/OFF switch to the ON position, located on the bottom of the vehicle.



**TIP FOR PARENTS:** To turn off sounds for quiet play, move the switch on the back of the remote to the  position.

**NOTE:** When the vehicle's strawberry headlight is illuminated, that indicates that the vehicle is turned ON. The vehicle uses battery power whenever its switch is in the ON position. To help conserve battery life, move the switch to OFF when you're not playing with the toy. The radio control has an automatic shut-off feature.

## TO PLAY



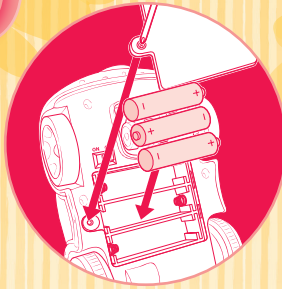
Press button to turn and reverse vehicle.



Press button to move vehicle forward.

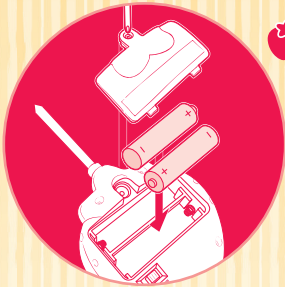


## BATTERIES



### TO INSTALL VEHICLE BATTERIES

Use a Phillips/cross head screwdriver (not included) to loosen screw in battery compartment cover (screw remains attached to cover). Remove cover. Insert 3 x 1.5V "AA" or LR6 size alkaline batteries. Alkaline batteries required. Replace cover and tighten screw.



### TO INSTALL RADIO CONTROL BATTERIES

Use a Phillips/cross head screwdriver (not included) to loosen screw in battery compartment cover (screw remains attached to cover). Remove cover. Insert 2 x 1.5V "AA" or LR6 size alkaline batteries. Alkaline batteries required. Replace cover and tighten screw.

## IMPORTANT: BATTERY INFORMATION

### ! CAUTION:

1. Always follow the instructions carefully. Use only batteries specified and be sure to insert them correctly by matching the + and - polarity markings.
2. Do not mix old batteries and new batteries or standard (carbon-zinc) with alkaline batteries.
3. Remove exhausted or dead batteries from the product.
4. Remove batteries if product is not to be played with for a long time.
5. Do not short-circuit the supply terminals.
6. Should this product cause, or be affected by, local electrical interference, move it away from other electrical equipment. Reset (switching off and back on again or removing and re-inserting batteries) if necessary.
7. **RECHARGEABLE BATTERIES:** Do not mix these with any other types of batteries. Always remove from the product before recharging. Recharge batteries under adult supervision. **DO NOT RECHARGE OTHER TYPES OF BATTERIES.**

## TROUBLESHOOTING

If your vehicle does not respond, please switch OFF and back ON again or replace the batteries in the vehicle and radio control.



### FCC STATEMENT

This device complies with Part 15 of the FCC Rules. Operation is subject to the following two conditions: (1) This device may not cause harmful interference, and (2) this device must accept any interference received, including interference that may cause undesired operation.

NOTE: This equipment has been tested and found to comply with the limits for a Class B digital device, pursuant to Part 15 of the FCC Rules. These limits are designed to provide reasonable protection against harmful interference in a residential installation. This equipment generates, uses and can radiate radio frequency energy, and, if not installed and used in accordance with the instructions, may cause harmful interference to radio communications. However, there is no guarantee that interference will not occur in a particular installation. If this equipment does cause harmful interference to radio or television reception, which can be determined by turning the equipment off and on, the user is encouraged to try to correct the interference by one or more of the following measures:

- Reorient or relocate the receiving antenna.
- Increase the separation between the equipment and receiver.
- Consult the dealer or an experienced radio/TV technician for help.

CAUTION: Changes or modifications not expressly approved by the party responsible for compliance could void the user's authority to operate the equipment.



Product and colors may vary.

Strawberry Shortcake™ and related trademarks © 2012 Those Characters From Cleveland, Inc. Used under license by Hasbro, Inc. American Greetings with rose logo is a trademark of AGC, LLC.

®\* and/or TM\* & © 2012 Hasbro. All Rights Reserved. TM & ® denote U.S. Trademarks.

19279 PN 7196190000

